

No changes to northern parking area

Existing markings to be refreshed

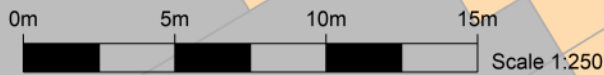
Proposed extension to the existing bus stop build-out and installation of raised kerbs for improved accessibility.

New reflective bollard

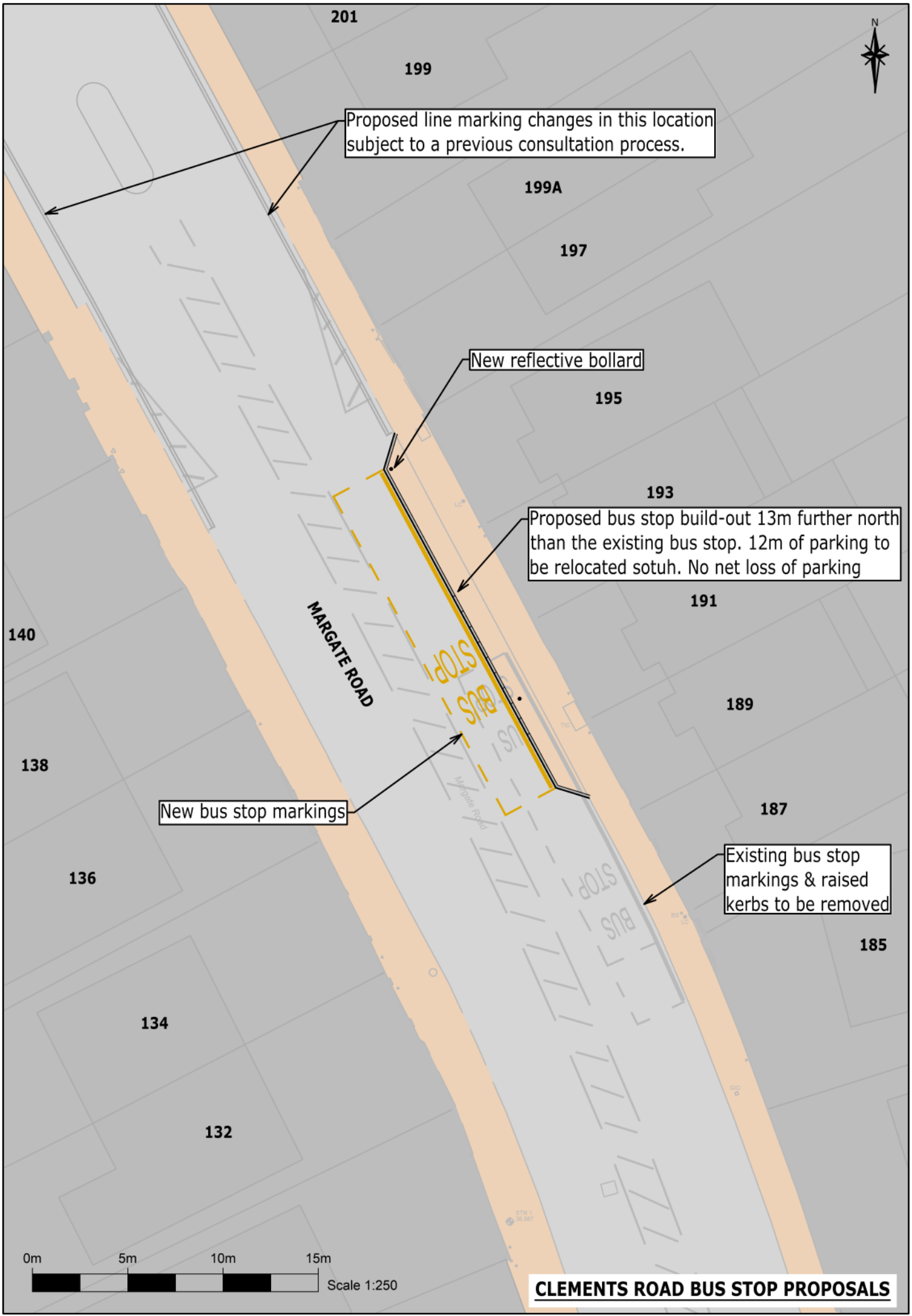
**WIGHTMANS USED CAR CENTRE**

Bus shelter to remain in the same place

Parking area reduced by approximately 5m -  
Loss of one parking space. 20m of parking retained which allows room for 3 parked cars\*.  
\*Based on the assumption of 6m per parked car



**HARE & HOUNDS BUS STOP PROPOSALS**



Proposed line marking changes in this location subject to a previous consultation process.

New reflective bollard

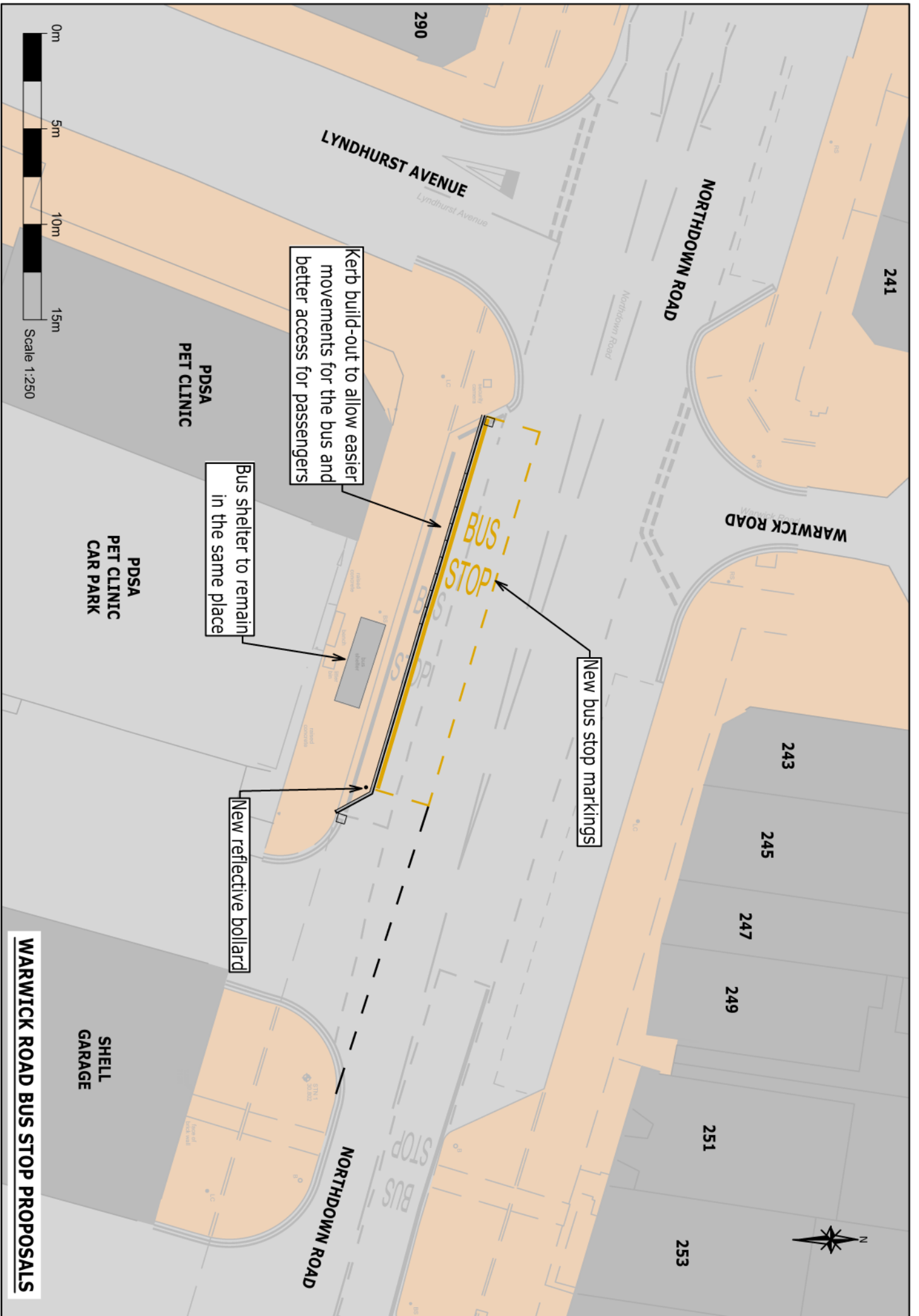
Proposed bus stop build-out 13m further north than the existing bus stop. 12m of parking to be relocated south. No net loss of parking

New bus stop markings

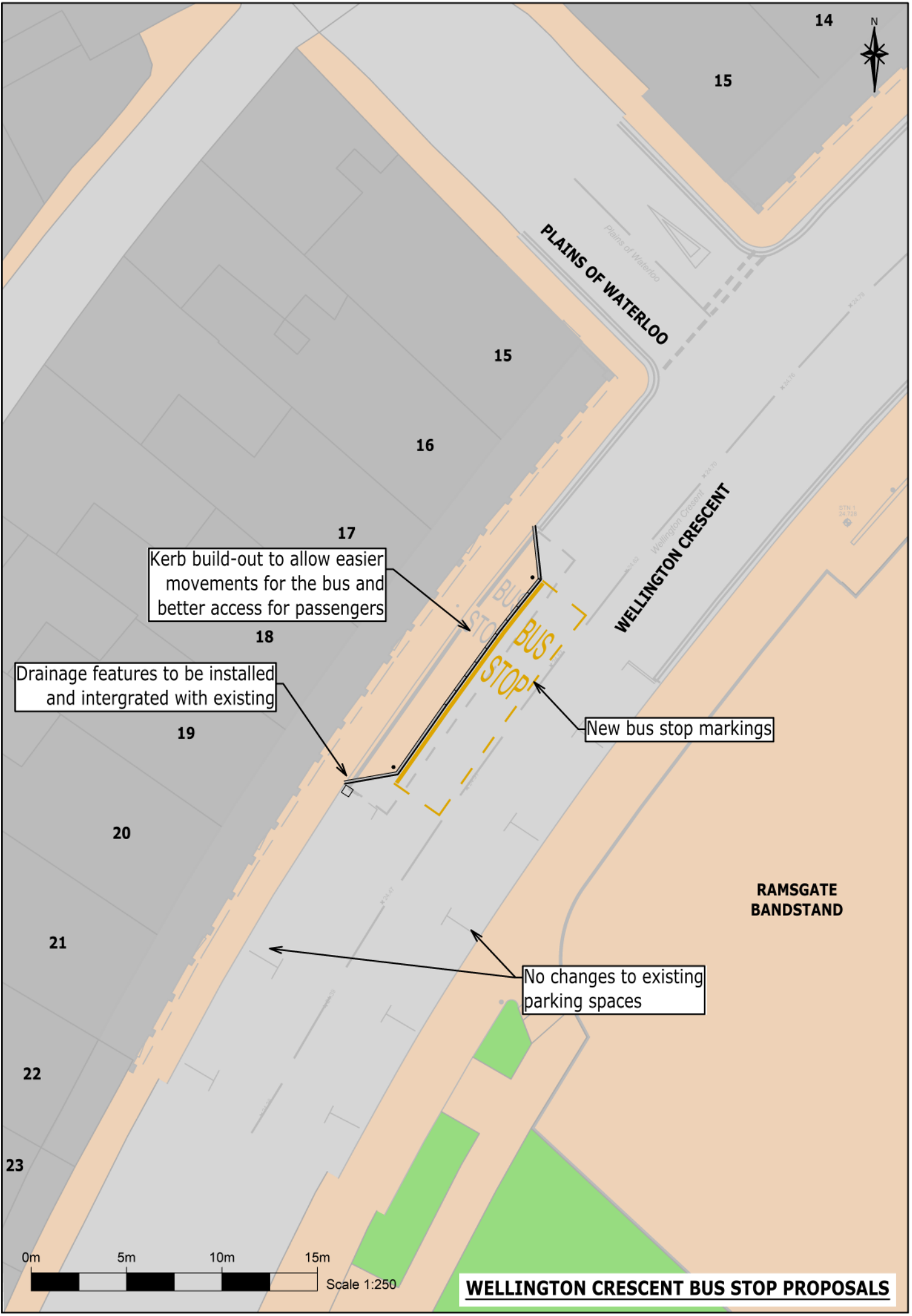
Existing bus stop markings & raised kerbs to be removed

0m 5m 10m 15m  
Scale 1:250

**CLEMENTS ROAD BUS STOP PROPOSALS**



**WARWICK ROAD BUS STOP PROPOSALS**

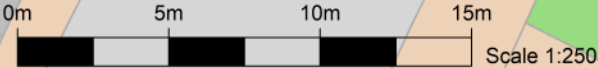


17  
Kerb build-out to allow easier movements for the bus and better access for passengers

18  
Drainage features to be installed and intergrated with existing

New bus stop markings

21  
No changes to existing parking spaces



**WELLINGTON CRESCENT BUS STOP PROPOSALS**